

Instructions

Please read the following instructions carefully before using the product and keep them for future needs.

1. Usage and storage instructions

Do not expose the product to humid environments or extreme temperatures, it could be damaged. If water enters by accident, stop the operation to prevent a short circuit. Do not use our product more often or for a longer period than traditional cigarettes. Keep the product out of the reach of children, adolescents and pets.

2. Contraindications

When using liquids with and without nicotine: Please note the warnings and instructions for use of the liquid products and do not mix them with other substances. Do not use the product if you have a known problem with nicotine or other liquid ingredients. In case of nausea, dizziness or rash, discontinue use and consult a medic immediately. The electronic cigarette is not for smoking cessation.

3. Warnings

Delivery to and use by children and adolescents under the age of 18 is prohibited. The product is not recommended for non-smokers.

This product is not suitable for pregnant women, women who are breastfeeding, people with cardiovascular and respiratory diseases, alcoholics and epileptics. Do not use the product if you have lung disease (such as asthma, COPD, bronchitis, pneumonia). The released vapor may cause an asthma attack, shortness of breath and coughing fits in the case of a previously damaged lung. If complaints occur, please seek medical attention immediately. Do not use our product if you have a known problem (allergies, intolerances, etc.) with nicotine or other ingredients of our product.

When using nicotine-containing liquids: nicotine-containing products are not suitable for people who, for medical reasons, should abstain from nicotine products. If the liquid is swallowed, contact the emergency number. You can also contact the poison emergency service in your area.

4. Information on possible adverse health effects

- none known, see the instructions of the liquid.

5. Information on addictive effects

If you use products containing nicotine, the following warning is displayed on the packaging of the liquids: "This product contains nicotine: a substance that is highly addictive."

6. Information on toxicological data

Overheating the liquid (over 240 ° C) in the electronic cigarette may cause toxicological substances. Please use the electronic cigarette according to the manufacturer's recommendation and operating instructions. The use of this product is at your own risk.

7. Contact

If you need additional information or if you have questions about the products and their use, please contact our local shops or visit our website: www.smokerstore.de



Manufacturer:

SmokerStore GmbH,
Eisenwerkstraße 26,
58332 Schwelm, Deutschland
Email: info@smokerstore.de
Tel.: +49 (0)2336 / 935899-0
Fax: +49 (0)2336 / 4744870



PDF Instructions on website

1. PRODUCT DESCRIPTION

SCOPE OF DELIVERY

1x Taifun® GT one	1x Allen Key 1,5 mm
1x Drip Tip	1x Allen Key 0,9 mm
1x Spare Parts Bag	1x Manual

SPECIFICATIONS

Dimensions:	50,0 mm x 23,0 mm 56,5 mm x 23,0 mm	Weight:	~ 69,0 g
Thread:	510	Capacity:	2 ml/4 ml
Material:	Stainless Steel (1.4301) / PEEK / PSU / NBR O-Rings		



2. SAFETY INSTRUCTIONS

- Do not expose the device to extreme temperatures; Avoid exposure to direct sunlight and high humidity.
- Do not use the device in an environment that is enriched with flammable gases, vapors or dusts; There is a danger of explosion!
- Do not drop, throw, or apply excessive force to the device to prevent damage; Do not use the device if you detect damage.
- Refill the liquid early to prevent dry hit.
- The device heats up during use; give it time to cool down again.
- Change the cotton, if you change the flavour.
- Clean the device regularly, as condensate and dirt may settle.
- Make sure that the mod that you use with the device is capable of performance; use of mods without protection is not recommended.

3. MANUFACTURER RECOMMENDATIONS

- Adjust the power of your mod to an appropriate level, depending on the used coil.

4. STORAGE INSTRUCTIONS

- If you don't use the device for an extended period of time, close the airflow control or empty the tank, remove the cotton and clean the device.
- Keep the device out of the reach of children and pets.
- Ensure that the device is firmly and securely in place.
- Store the device clean and dry; avoid high humidity.
- Do not store the device under extreme temperatures; avoid exposure to direct sunlight.

5. DISPOSAL NOTICE

- The packaging must be disposed of in an environmentally friendly manner.
- Products marked with the crossed out bin, do not belong in the trash. These products can be disposed of free of charge in your local trade or at community collection points. Check with your local council, town hall or local waste management company.

AUTHENTICITY VALIDATION

You can check the authenticity of your Taifun product at www.taifun-check.com.

You can find the verification code and the serial number on your device: 12345678911-1234 (verification code - serial number)

6. PRODUCT OVERVIEW

COMPONENT OVERVIEW

<p>A</p>  <p>1x Base</p>	<p>B</p>  <p>1x Isolator PEEK</p>	<p>C</p>  <p>1x Positive Pole Screw M3x8 mm</p>	<p>D</p>  <p>1x Screw M2x4 mm</p>
<p>E</p>  <p>1x Isolator Black</p>	<p>F</p>  <p>1x Grub Screw M2x3 mm (for closing the external air supply)</p>	<p>G</p>  <p>1x O-Ring NBR 50 17x1,5 mm</p>	<p>H</p>  <p>1x O-Ring NBR 70 11x1 mm</p>
<p>I</p>  <p>1x Tank Section TopCap/Bell</p>	<p>J</p>  <p>1x Tank Section Tankshield</p>	<p>K</p>  <p>1x Tank Section PSU Tank</p>	<p>L</p>  <p>1x O-Ring NBR 50 17x1,5 mm</p>
<p>M</p>  <p>1x O-Ring NBR 50 15x1 mm</p>	<p>N</p>  <p>1x Positive Pole</p>	<p>O</p>  <p>1x Screw M2x4 mm</p>	<p>P</p>  <p>1 x O-Ring NBR 70 8x1 mm</p>
<p>Q</p>  <p>1x Air Pin</p>	<p>R</p>  <p>1x O-Ring NBR 70 2x1 mm</p>	<p>S</p>  <p>1x Drip Tip</p>	<p>T</p>  <p>2x O-Ring NBR 50 5x1,5 mm</p>

IMPORTANT

The device is delivered fully assembled. All O-Rings and isolators are already installed correctly. This list is only for illustration and possible assembly after cleaning the individual parts.



7. START UP

ATTACHING THE COIL

IMPORTANT

Only use coils made of suitable wires. The authorized retailer offers a wide range of different coils and can assist you in selecting the right one.



First, the screws D and O are slightly unscrewed.



The ends of the coil are positioned under the screws.



Then bend the wire ends and retighten the screws D and O again. This fixes the coil in place.



With a winding aid, the coil can still be aligned somewhat.



Cut off the exceeding ends of the wire.



The coil should now be centered over the air hole.

WARNING

Use an ohm meter to check the resistance of the coil/device before using it. Don't use the device, if a short circuit is detected. This could lead to battery damage. Check if there is a contact between the coil ends and the surrounding parts.



INSERT COTTON



Cut a suitable cotton strip to size. Carefully guide it through the coil.



The ends of the cotton are trimmed and positioned in front of the side openings for liquid flow.

FILLING THE TANK



To fill the device, it must first be turned upside down.

Now carefully unscrew the tank section from the base, so that no remaining liquid is spilled.



Hold the tank at a slight angle at the beginning. Carefully fill the liquid into the tank along the edge. During filling, slightly raise the tank again so that you can see the filling level. Stop filling as soon as the liquid level reaches the top edge of the bell.

Now screw the base back on.

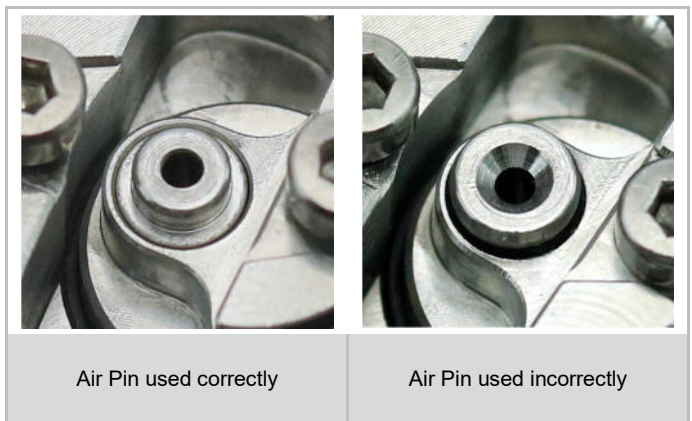
WARNING

- Make sure to fill the liquid at the edge of the tank next to the bell. No liquid should get into the air opening of the bell.
- Always make sure that the tank is sufficiently filled to avoid dry vaporization.
- Make sure that no liquid gets on your skin, otherwise wash these areas thoroughly.



REGULATION OF AIR SUPPLY

The true control of the air supply takes place inside the device. In the base there is an Air Pin with an inner diameter of 1.2 mm. Optionally, other Air Pin variants with diameters of 0.8 mm, 1.0 mm, 1.5 mm and 1.8 mm are available. When inserting the Air Pin, make sure to insert it with the bottom side facing down.



For the external air supply, there are two air holes in the base, one of them can optionally be closed with a grub screw. This grub screw can be inserted with the 0.9 mm Allen key if necessary. Depending on your own draw technique and the amount of nicotine in the liquid, the insertion of the grub screw can increase the noticeable throat hit. However, it should be noted that the air supply is primarily limited by the inserted air pin inside the vaporizer. The left hole has an air inlet with a diameter of 2.2 mm. The right hole has an air inlet with a diameter of 1.6 mm.



IMPORTANT

The outer set screw is not used to regulate the air volume in the sense of an airflow control. For a smooth vapor experience you leave both channels open and regulate the draw resistance via the inner Air Pin.



INSERT / REMOVE AIR PIN

We recommend using tweezers to insert or remove/replace the air pin. Make sure that the Air Pin is always inserted with the bottom side facing down.



8. CLEANING

Do not use cleaning agents as they could harm the O-Rings.

Before assembling, check the completeness and positioning of the O-Rings to prevent leakage of liquid.

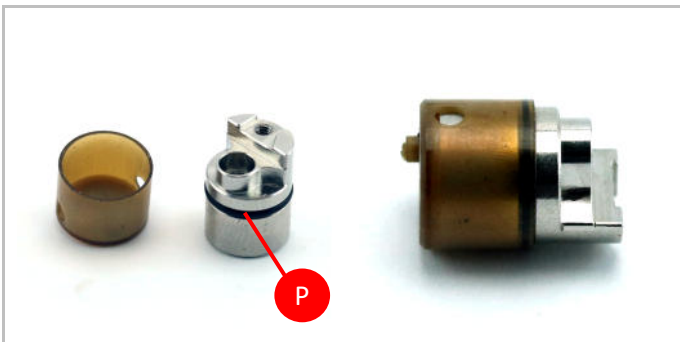
- Disassemble the device into its components.
- Clean the components (not the cotton) with warm water or in an ultrasonic bath.
- Completely dry the components before reassembling the device.

9. MAINTANANCE

- Wait until the device has completely cooled down before disassembling, to prevent burns.
- Make sure that there is no power supply by unscrewing the device from the mod or by switching off the mod.

ASSEMBLING DEVICE

- The device is usually delivered fully assembled, the following instructions are for the assembly after cleaning.
- Moistening the sealing rings with liquid makes the assembly easier.
- Please use only suitable tools for assembly.



The positive pole [N] is plugged into the positive pole isolator [B]



The isolator [E] is inserted into the base [A] from below.



Now the positive pole [N] with the isolator [B] is pushed into the base [A].



Then push the positive pole screw [C] from below through the base [A] and fix the positive pole [N].



The grub screw [F] is screwed into the base [A] from the side. (optional)



A suitable air pin [Q] is inserted into the positive pole [N]. (optional)



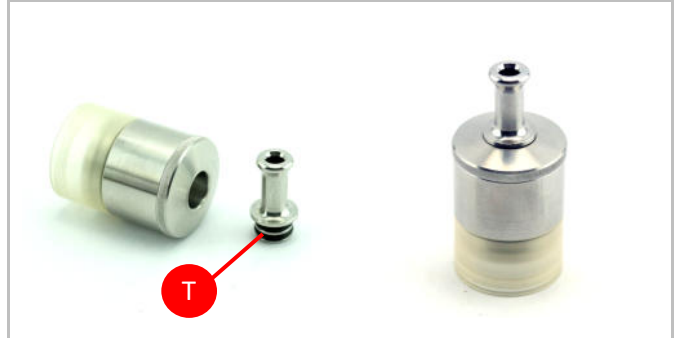
The screws [D,O] for fixing the coil are screwed into the base [A].



The tank shield [J] is slid over the PSU tank [K].



The bell [I] is screwed to the PSU tank [K].



The Drip Tip [S] is placed on the Top Cap [I].



Base [A] and tank [K] are screwed together.



Done!

REPLACING THE PSU TANK

If the PSU Tank is damaged or broken, it must be replaced.

- Only use original spare parts, which can be obtained directly from www.smokerstore.de or from authorized dealers.
- Before replacing the PSU Tank, the atomizer must be completely emptied.

REPLACING SEALING RINGS

Sealing rings are used to seal the device.

- If you notice liquid or moisture leaking out of the device, the cause may be brittle seal rings that need to be replaced.
- Moistening the sealing rings with liquid makes the assembly easier.

A comprehensive guide can be downloaded online at www.smokerstore.de as a PDF. See also QR code on page 1 of this manual.

If you have further questions about attaching a coil and the individual settings of the device, please contact your SmokerStore dealer or the SmokerStore service.